

## Adding Pictures to Voicethread.

Voicethread is kind of like Photostory 3 – it allows you to upload a series of photos and then to add text or audio to them. And it gives you the opportunity to get “embed” codes that you can load into other apps, like Google Earth. We were going to use Flickr, but it looks like that might not work for us, so we’re going to try Voicethread and see how we go on this.



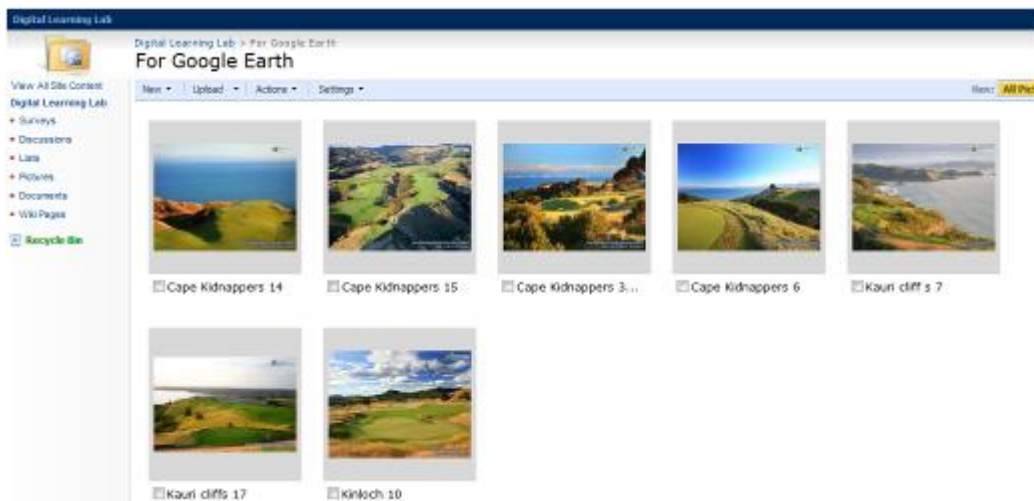
I have registered you all at the site, which is <https://ed.voicethread.com/>. I have created accounts for you all with the following details, so go try and log in. All of your accounts are managed by me, so please use this account for DLL stuff only! More instructions follow on the next page. Good luck!

name	identity	email	password
Amani AL-KHAFAJI	Amani AL-KHAFAJI	20702@diocesan.school.nz	123456
Lucy BEAUMONT	Lucy BEAUMONT	19449@diocesan.school.nz	123457
Sarah CARO	Sarah CARO	8928@diocesan.school.nz	123458
Joanna CHAMBERLIN	Joanna CHAMBERLIN	11720@diocesan.school.nz	123459
Sarah CLARK	Sarah CLARK	19571@diocesan.school.nz	123460
Gemma COLE	Gemma COLE	19574@diocesan.school.nz	123461
Georgia ELLIS	Georgia ELLIS	20644@diocesan.school.nz	123462
Hannah FERGUSON	Hannah FERGUSON	19678@diocesan.school.nz	123463
Lauren FONG	Lauren FONG	19690@diocesan.school.nz	123464
Ellie FOREMAN	Ellie FOREMAN	19693@diocesan.school.nz	123465
Louisa GALLIE	Louisa GALLIE	19719@diocesan.school.nz	123466
Anabel GOULDING	Anabel GOULDING	20499@diocesan.school.nz	123467
Brooke GUNDY	Brooke GUNDY	19770@diocesan.school.nz	123468
Jessica LEWIS	Jessica LEWIS	19937@diocesan.school.nz	123469
Rosie MCDERMOTT	Rosie MCDERMOTT	20025@diocesan.school.nz	123470
Sonia NAIR	Sonia NAIR	20082@diocesan.school.nz	123471
Anna PREBBLE	Anna PREBBLE	20155@diocesan.school.nz	123472
Shahana RAZAK	Shahana RAZAK	40901@diocesan.school.nz	123473
Charlotte RINGWOOD	Charlotte RINGWOOD	8695@diocesan.school.nz	123474
Kimberley SAMPSON	Kimberley SAMPSON	20503@diocesan.school.nz	123475
Lizzie SNOW	Lizzie SNOW	10379@diocesan.school.nz	123476
Karla SPIKA	Karla SPIKA	20270@diocesan.school.nz	123477
Phoebe STANFORD	Phoebe STANFORD	40424@diocesan.school.nz	123478
Harriet STEEL	Harriet STEEL	11729@diocesan.school.nz	123479
Fatima SYAD	Fatima SYAD	40287@diocesan.school.nz	123480
Amelia THORNTON	Amelia THORNTON	20714@diocesan.school.nz	123481
Jacqueline WONG	Jacqueline WONG	20431@diocesan.school.nz	123482

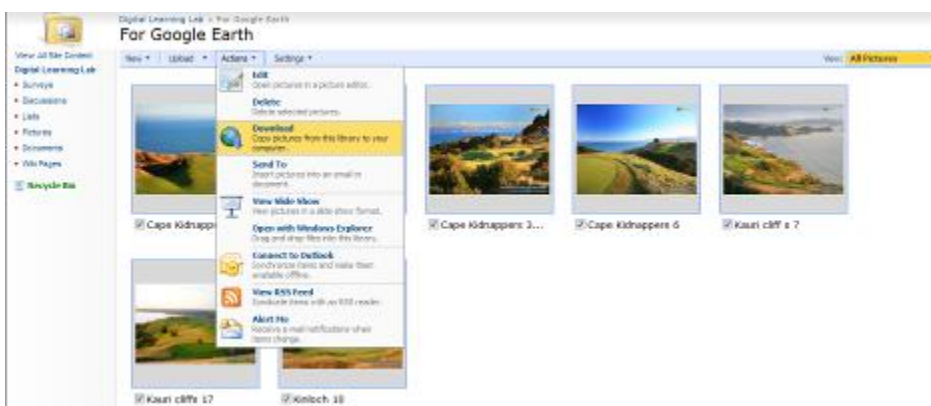
Now, go to your 8DLL sharepoint site. There is a folder in the Pictures library called For Google Earth.



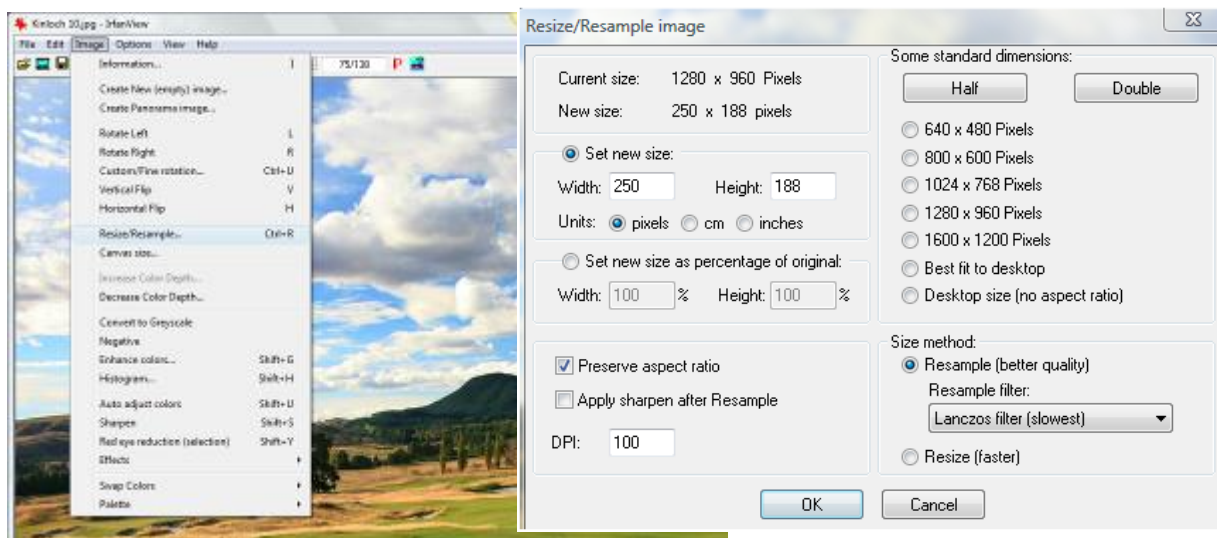
Open this folder and download all of the photos to your computer. Put them in your DLL folder in a folder for Google Earth. There are 7 photos as shown below



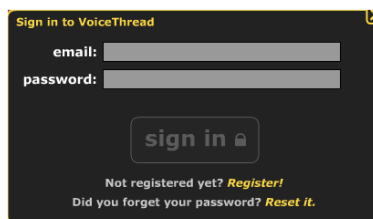
To download, click in the little boxes next to each photo and go to Actions>Download to get them all.



Now, use IrfanView to resize the pictures to be 250 pixels wide. The vertical pixels will sort themselves out. (The example below uses the Kinloch 10 photo which starts at 1280 x 060 pixels). By the time you Resize to 250 pixels wide, it'll be 188 pixels high. (see the box below).



Resave each of the files to your DLL folder.



Now, upload each of the photos into your space on Voicethread. Log in to your voicethread account . In this example, I've logged in using Karla's details. Once I've entered email and password details, the following screen displays ...



Click on the Create Tab, and see if you can find your way through the three steps to upload your photos. At the end try and make them all "public".

If you have time, have a look at the 1 Minute VoiceThread and the Video Doodling tutorials.

If this is all too hard, then go to <http://coolmath4kids.com> and try any of the games on this site.